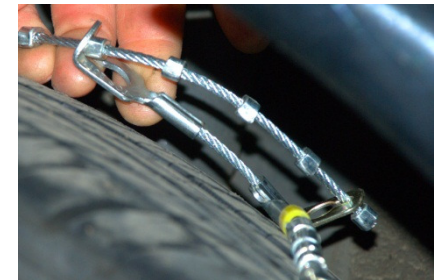
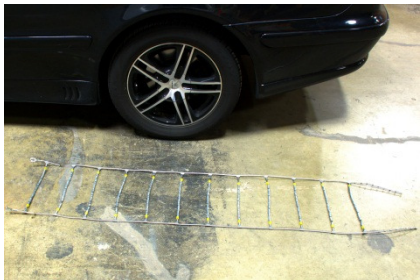


Passenger Cable Tire Chain Installation Instructions

1. Lay the cable chain out on the ground next to the tire. Unroll it with the open side of the cross member hook facing up and the end hooks facing towards the front of the vehicle.
2. Next, drape the tire chain over the tire. Drive forward one half tire revolution.
3. Reach to back of tire and fasten the inside end hook.
4. Attach any excess side cable into the metal clip.



5. Next, take hold of the outside cable with both hands and pull it towards yourself.
6. Hand tighten the cable and fasten.
7. Attach the excess side cable into the metal cup.
8. Drive forward one car length, then check the chain and **hand tighten** again if needed and/or possible.

